

Chestnut Carbon Sustainable Restoration Project: Stakeholder Consultation

Workshop Purpose

- **Share project details**, including where the project stands today, its expected impacts and opportunities
- **Engage with stakeholders** to shape and inform project design moving forward in ways that can bring added value to the communities in which we operate



Welcome!

- Sign-in and make a name tag for yourself
- Grab some refreshments and a seat
- Prepare to actively listen and participate





Chestnut Sustainable Restoration Project: Stakeholder Consultation

December 09, 2025



Today's Agenda

- Introductions – 15 mins
- Presentation about Chestnut and Project Design– 40 mins
- Q&A – 15 mins
- BREAK (10 mins)
- Group Discussion – 30 mins
- Next Steps & Wrap Up – 10 mins



Introductions

Please introduce yourself and let us know:

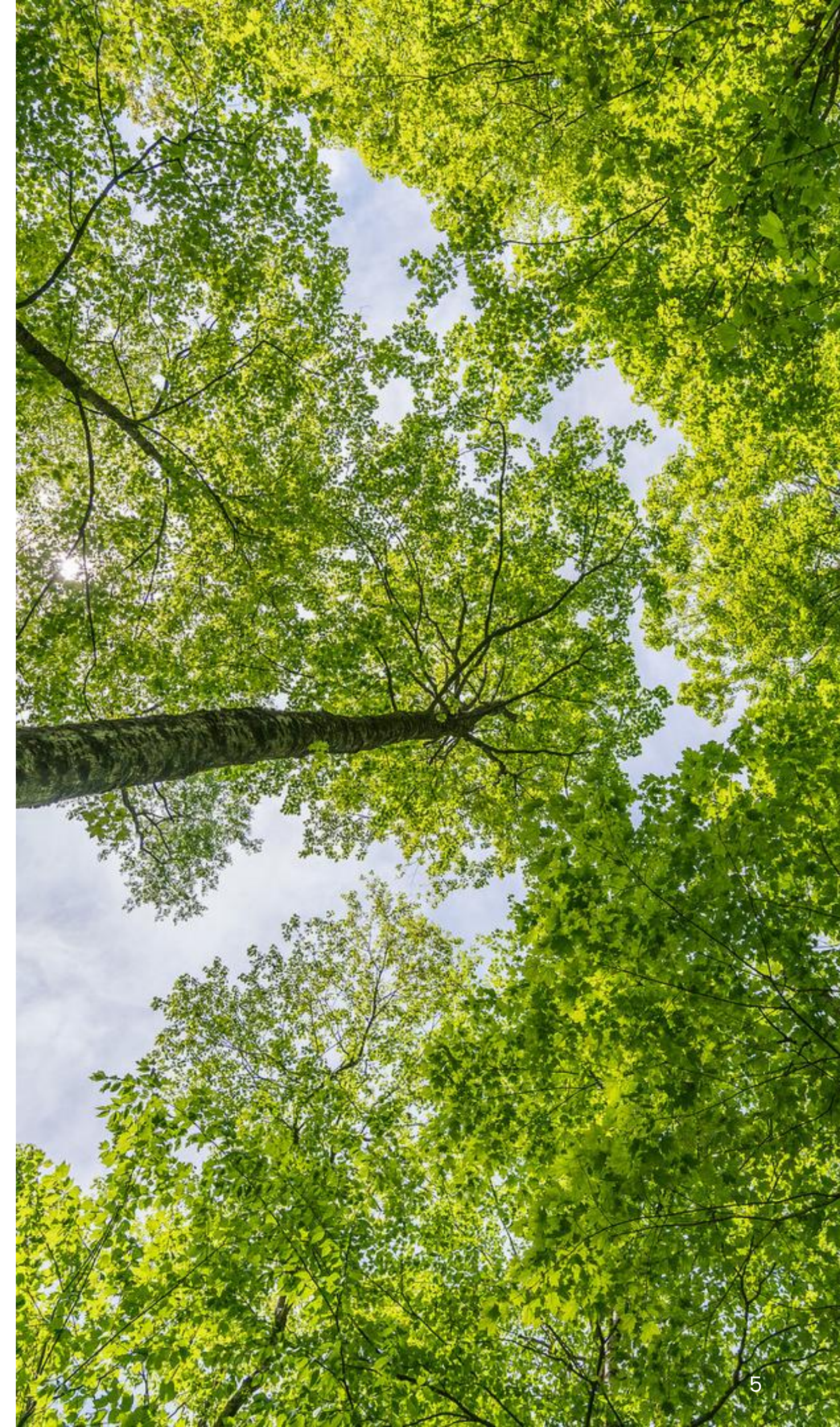
- *What would you like to hear from us?*
- *What would you like to discuss?*



Who We Are

Chestnut Carbon develops scalable and sustainable nature-based carbon projects that help our clients achieve their net-zero goals.

We're committed to improving society by restoring lands to their natural state, strengthening ecosystem resilience and promoting biodiversity, and bringing economic opportunities to local communities.



Who is Chestnut Carbon?



Our Mission

We support the long-term restoration and conservation of forests by empowering stewardship for profit, for us, our partners, and the communities in which we operate.

We lead by example, acting with integrity and striving to be the preeminent nature-based carbon project developer, delivering the highest quality products to the market.





Project Overview

- Restoring native, ecologically diverse, and sustainable forests.
- Delivering high quality carbon credits and mitigating climate impacts.
- With four planting seasons completed/underway, the project to-date encompasses ~62,500 acres across the SE USA.

The Gold Standard

A higher standard for climate security and sustainable development. The Gold Standard encourages projects that impact the planet, people and nature.

Gold Standard for the Global Goals is a standard that sets requirements to **design projects for maximum positive impact in climate and development** – and to measure and report outcomes in the most credible and efficient way.



What does successful forest restoration look like?



- ✓ Selecting diverse, native species appropriate for the site
- ✓ Involving local experts and community members in project design
- ✓ Monitoring using repeated inventories and verifications
- ✓ Long-term planning for project permanence and risk mitigation
- ✓ Evaluating project impacts and multiple scales

Project Progression Timeline

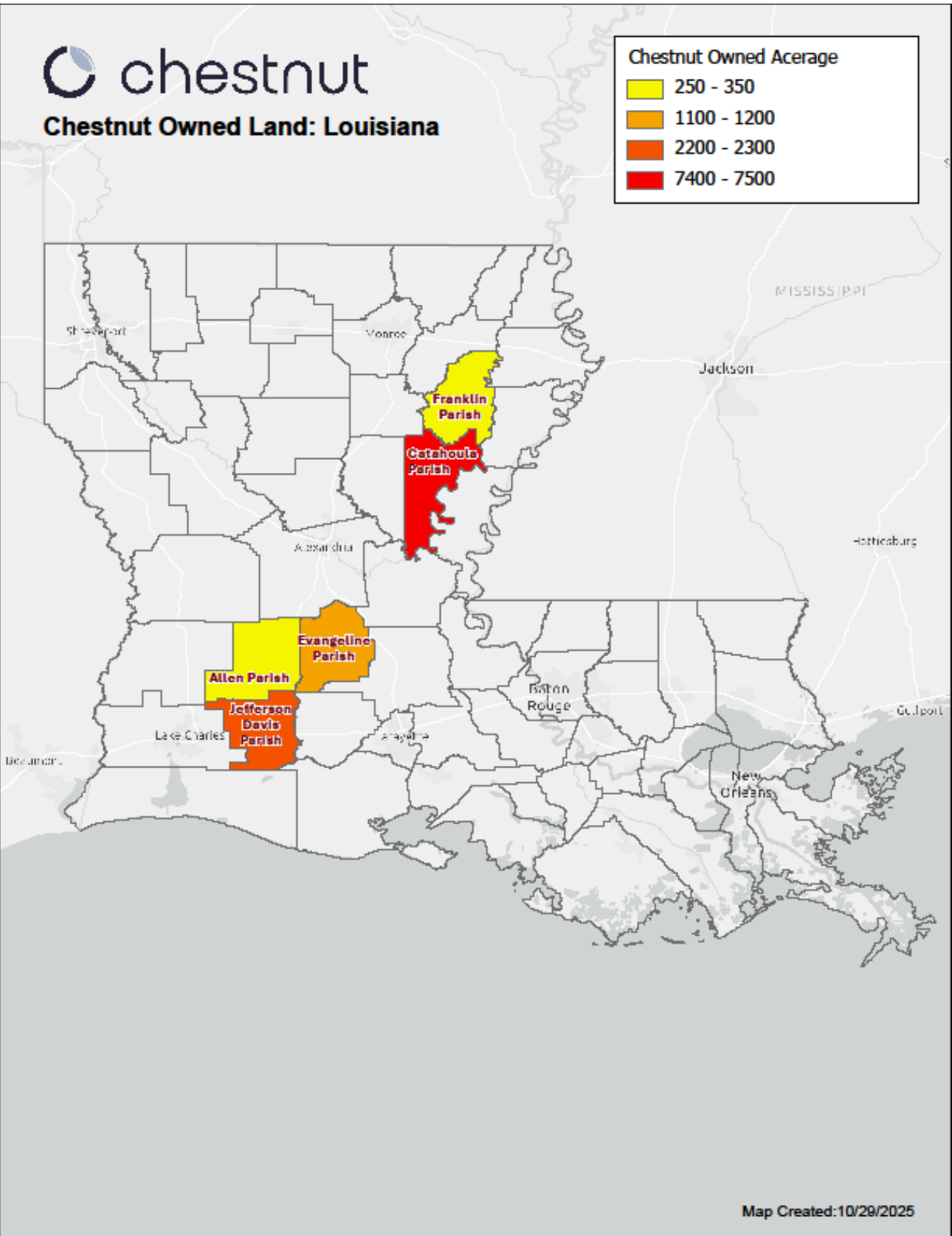
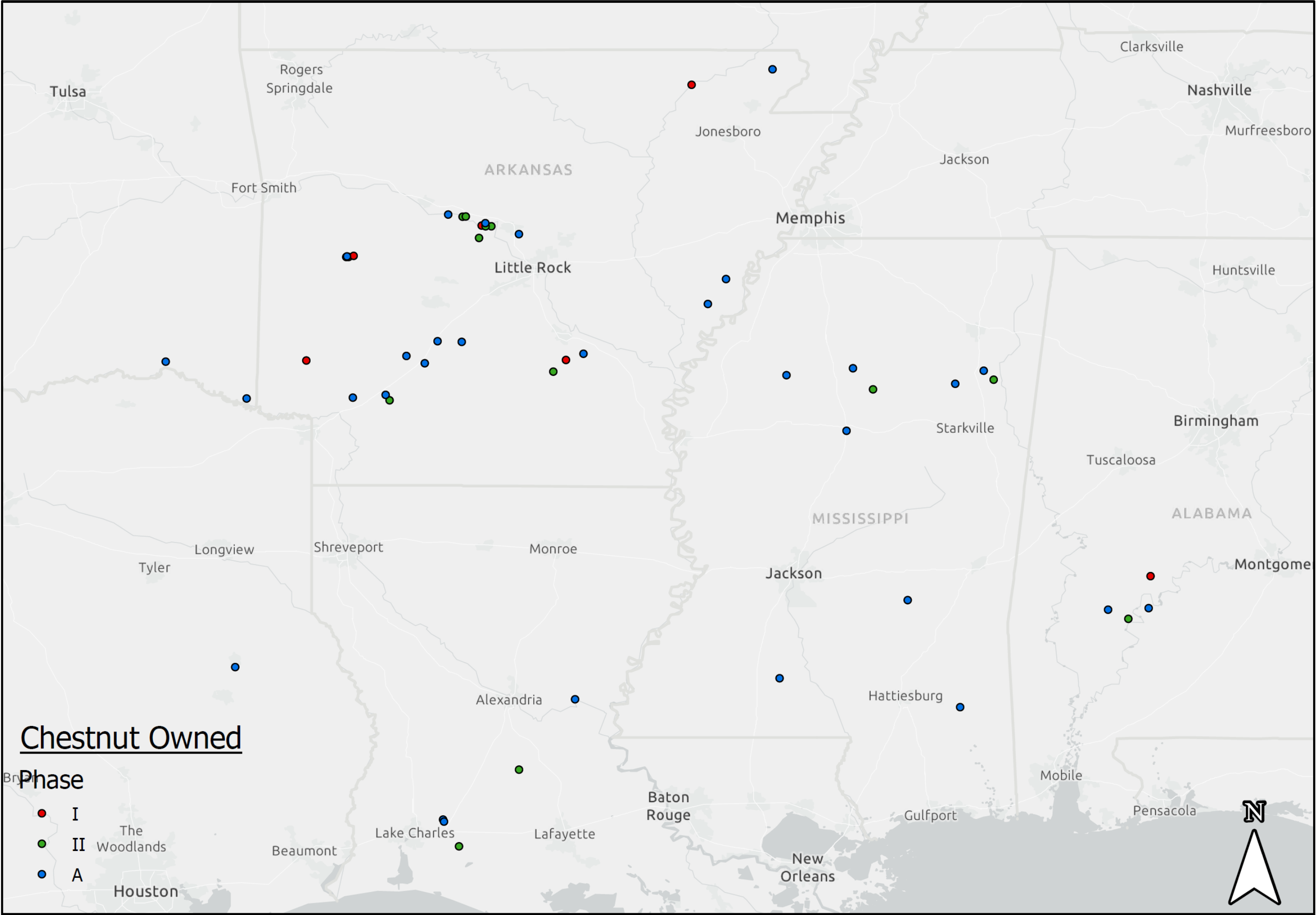


Properties Acquired – Years 1–3

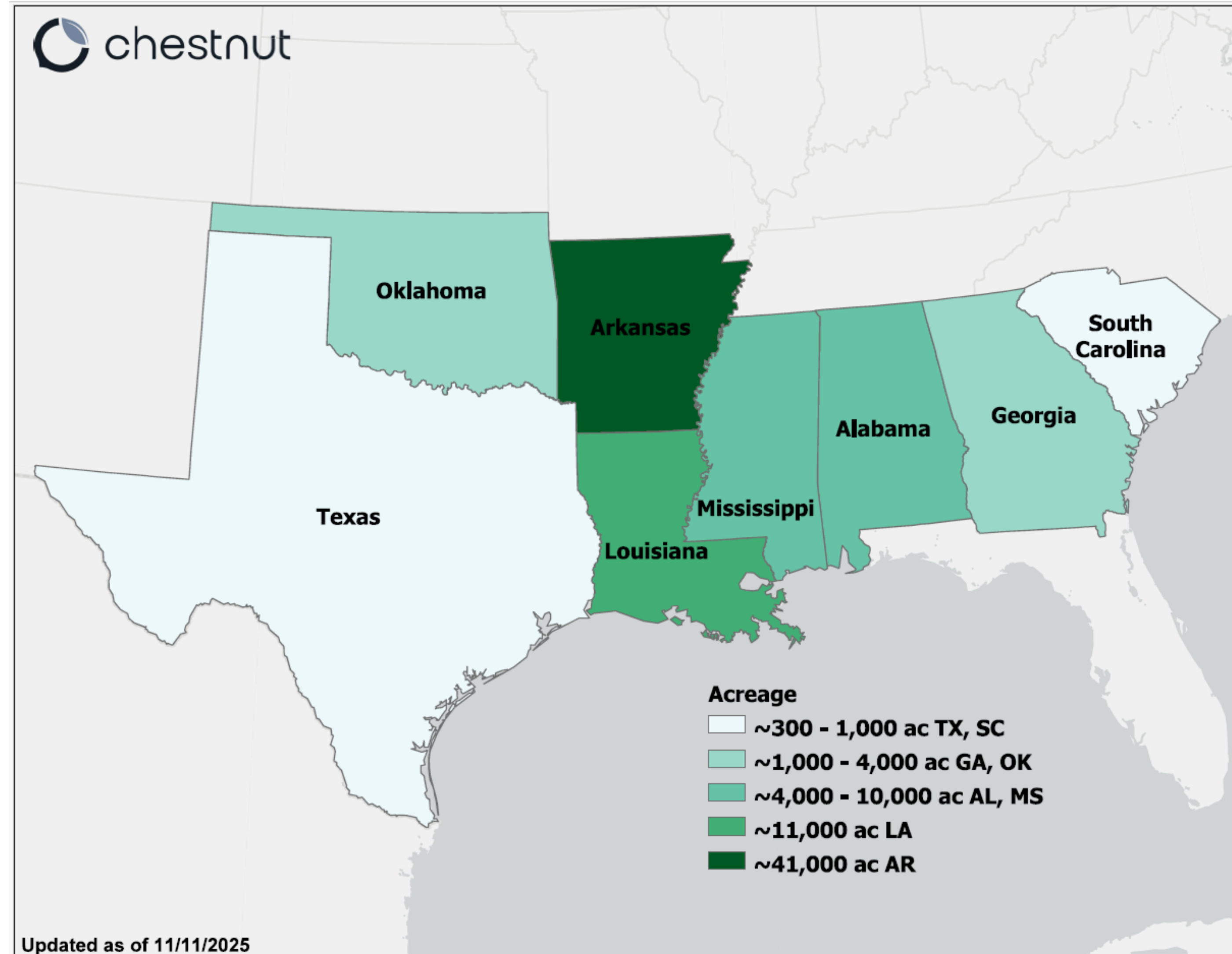


Chestnut Afforestation Project Sites Phases I, II, A

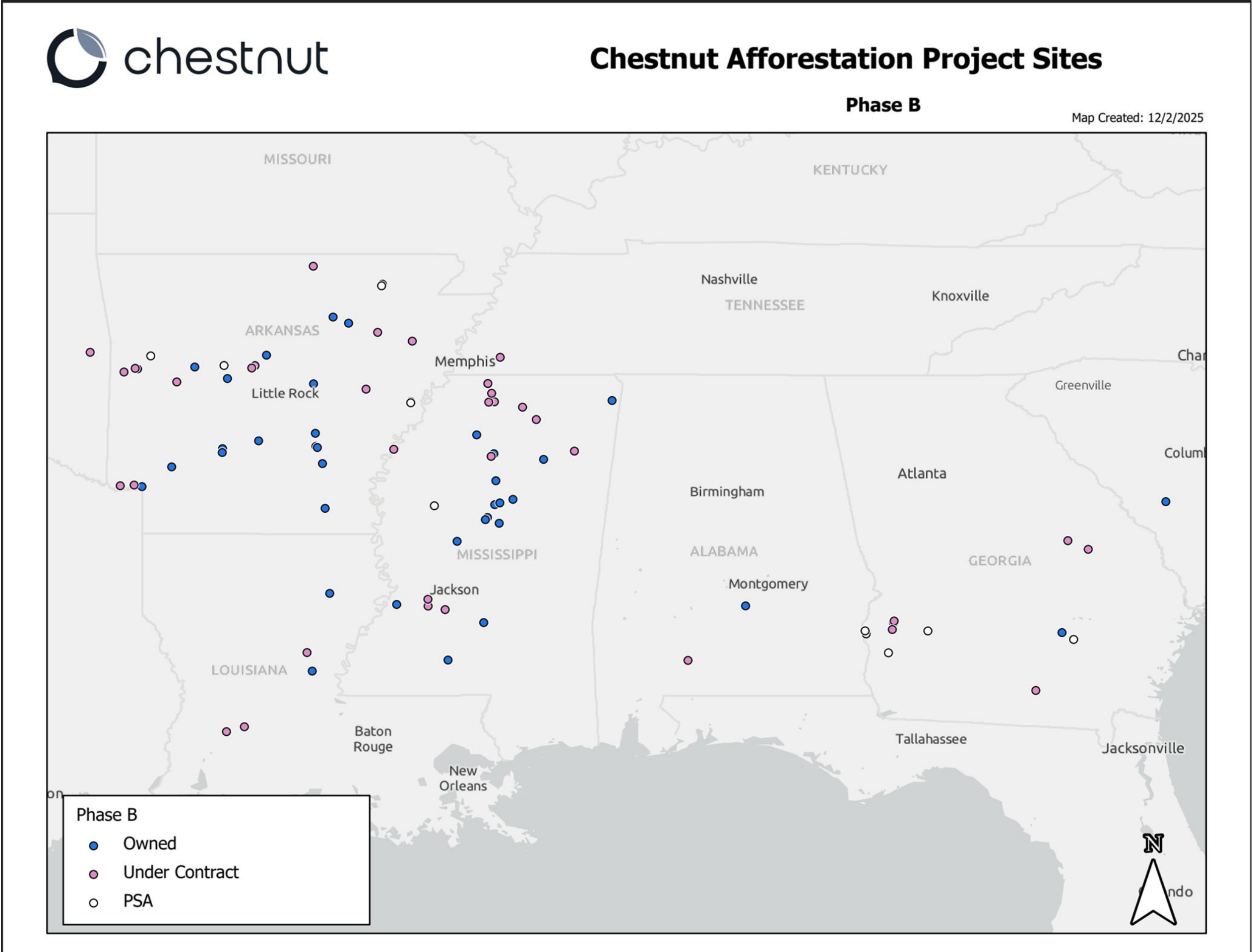
Created 10/23/2025



Total Acreage by State



Phase B Map



Getting trees in the ground

- Land screening for cultural and environmental importance.
- Planting plan design & mapping
- Site preparation
- Seedling procurement
- Forest Stewardship Council® Certification
- Tree planting operations

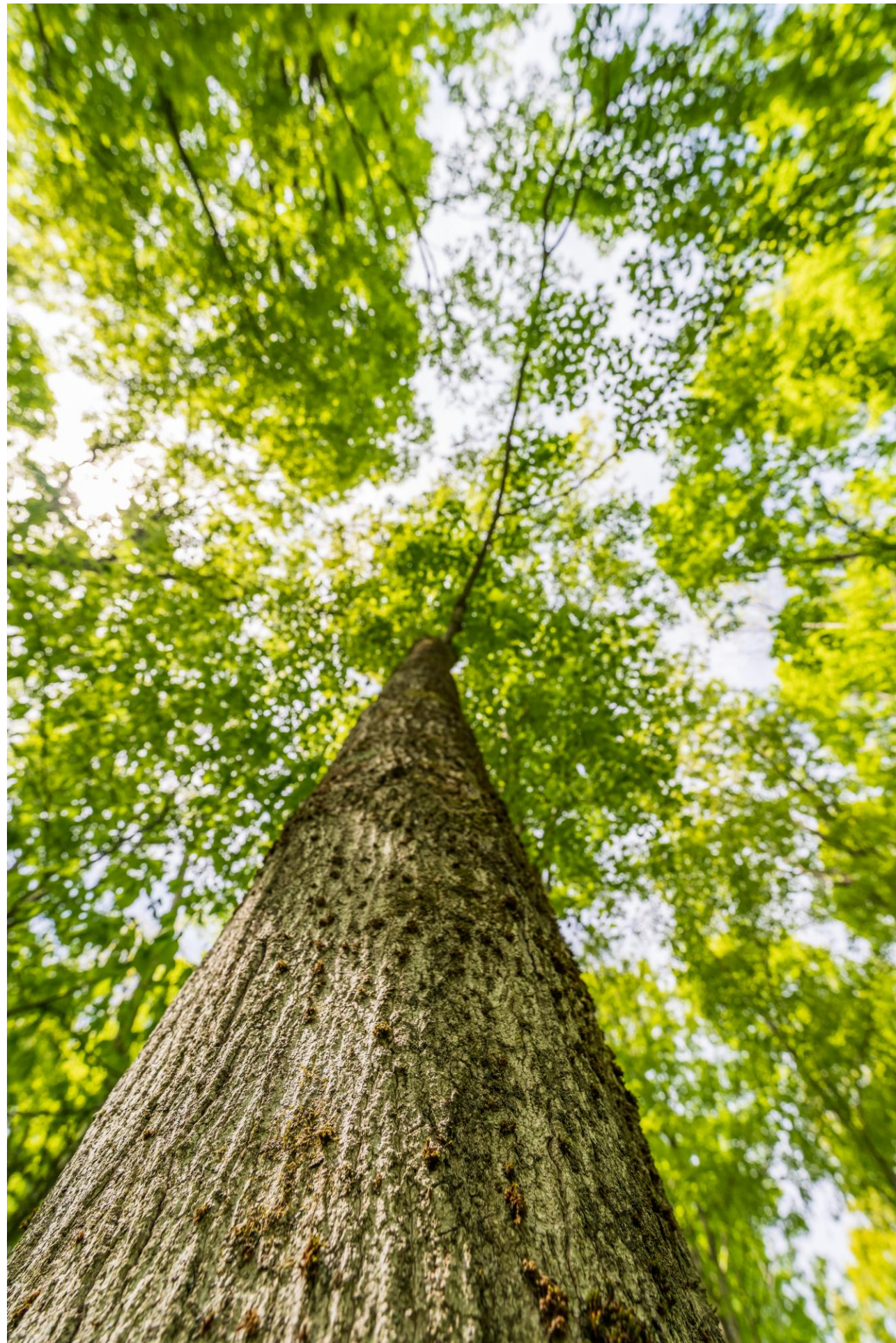


Getting trees in the ground

- Stocking and survival surveys
- Ongoing monitoring
- Repeated inventories and verifications



Chestnut Improved Forest Management



A Partner Project to Sustainable Restoration

- What happens to portions of property that are already forested?
 - They are enrolled in Chestnut's Improved Forest Management (IFM) program which seeks to protect existing forested areas.
 - We welcome any and all feedback on this project. To submit a comment, please do so at:

<https://chestnutcarbon.com/stakeholder-consultation/>



How to Maximize Positive Impacts

Expected positive impact

1. Local job creation
 - Affects local communities
 - Growth of hardwood seedling industry
 - Proven economic impact in parishes/counties
2. Increased wildlife habitats and connectivity
 - Affects local communities
3. Improved water quality and regulation
 - Affects downstream communities
4. Increased access
 - Affects traditional and cultural users
 - Affects the general public
 - Educational activities

Plan to maximize

1. Maintenance and enforcement of policies for Chestnut Carbon and our partners, vendors, and contractors to increase local impact
2. Advisory, plantation design, and FSC management
3. All per FSC: improved stream crossings, eliminate soil disturbance in riparian areas, promote riparian vegetation
4. Access policies for traditional and cultural uses, public takeout partners and public benefit easements, availability to conduct educational activities if community desires

Economic Impacts on Louisiana

- Chestnut Carbon completed an economic analysis that detailed the economic and fiscal impacts for all states in the project scope for properties acquired in 2022-2024
 - Five projects were present in Louisiana, across 3 parishes: Catahoula, Evangeline and Jefferson Davis
- In Louisiana, the project:
 - **Supported 115 jobs**
 - **Provided over \$5 million in labor income, and over \$14 million in total economic output**

Table 9. Economic Impact of Louisiana Restoration Projects by Year

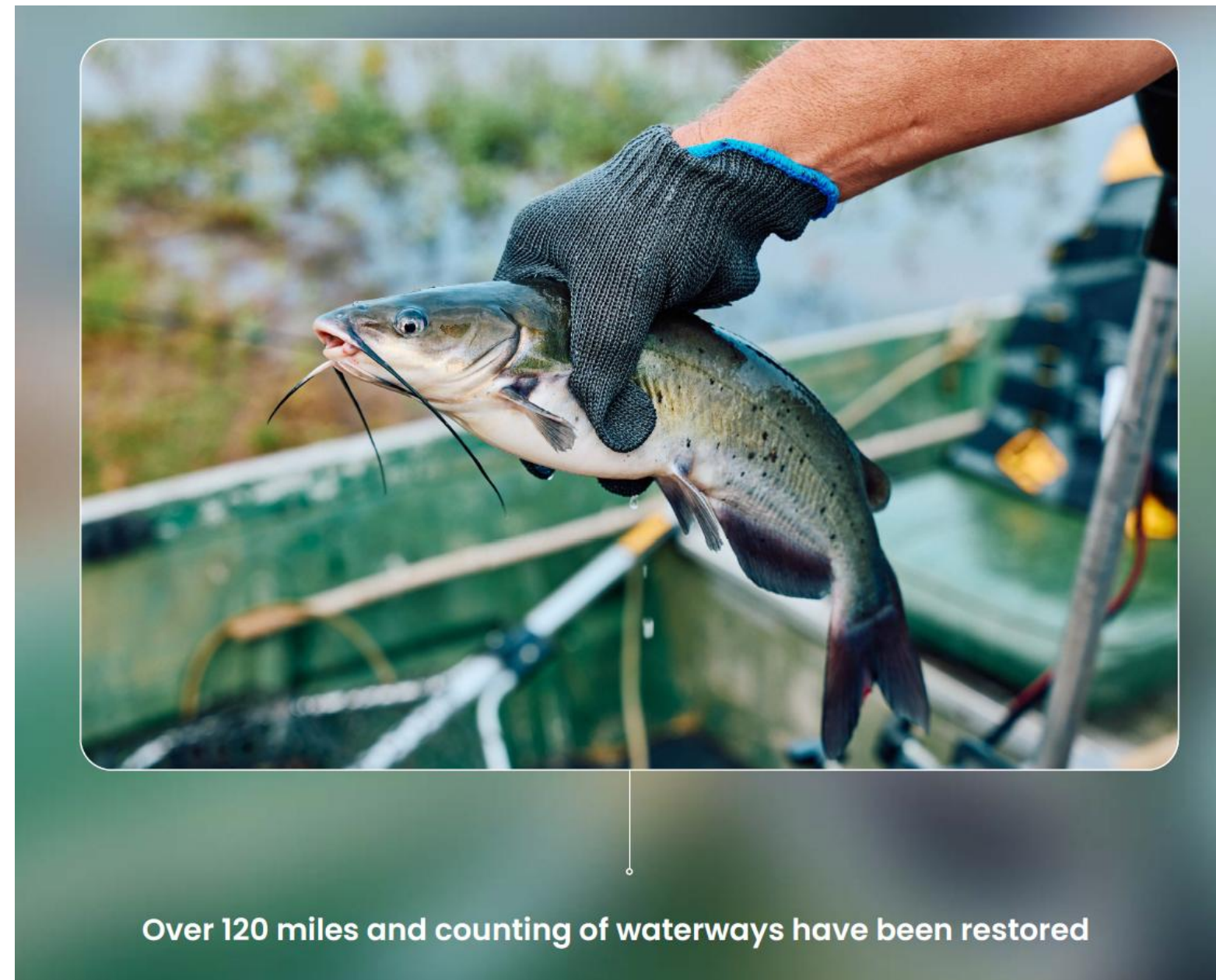
	Year 1	Year 2	Year 3	Total
Employment	–	38	77	115
Labor Income	–	\$1,773,000	\$3,893,000	\$5,666,000
Value Added	–	\$2,355,000	\$4,942,000	\$7,297,000
Economic Output	–	\$5,223,000	\$9,108,000	\$14,331,000

Source: Bureau of Economic Analysis, IMPLAN, Chestnut Carbon. Analysis by Beacon Economics. (2025 dollars).



Biodiversity – Wildlife Impacts

- Biodiversity benefits include wildlife recovery, improved water quality, enhanced soil health, and increased species composition
- By removing agricultural runoff sources and establishing native riparian buffers that stabilize riverbanks and filter pollutants, our efforts are helping to create healthier fish habitats and improve water quality for downstream communities



A Louisiana black bear caught on camera at our Catahoula Parish restoration site.

The Louisiana black bear was listed as threatened in 1992 and was delisted in 2016 thanks to conservation efforts. Here is photo evidence of how large-scale afforestation creates wildlife corridors that allow threatened species to recover and thrive.

Community Access

- Chestnut Carbon prioritizes community access, including hunting/fishing and traditional access opportunities.
- Chestnut has local Rural Lands Managers whose job is to work with community members on these access opportunities, as well as to assist in employment opportunities surrounding property maintenance, site prep, etc.
- Chestnut Carbon also seeks local partnerships with other organizations/associations (i.e. Louisiana Forestry Association).



How to Minimize Adverse Impacts

Potential Adverse Impacts

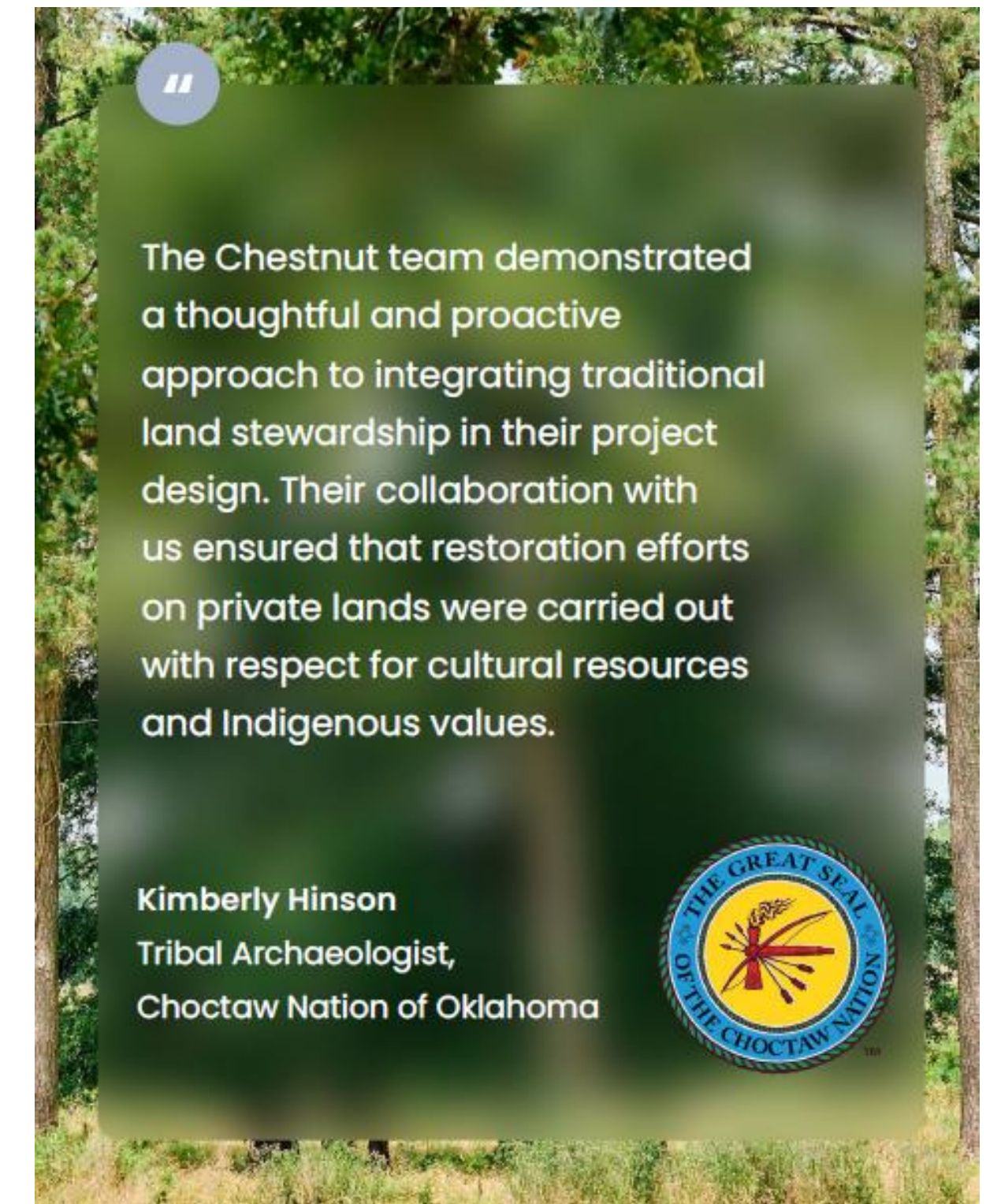
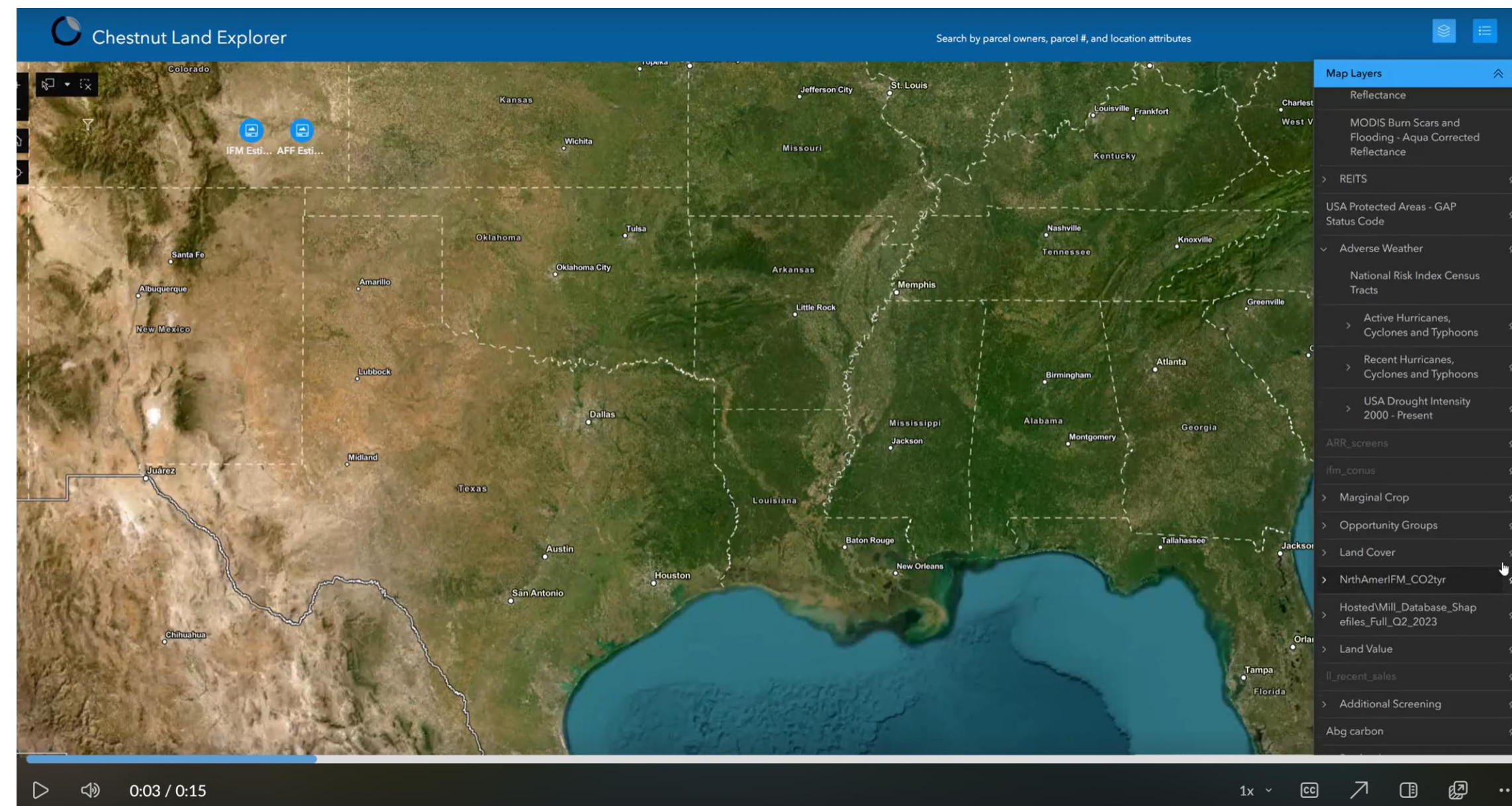
1. Increased land prices
 - Affects ranchers and farmers
2. Limited public use
 - Affects local communities
3. Increased wildfire risk
 - Affects neighbors
4. Decreased production in historical uses
 - Affects value chain businesses
5. Loss of cultural identity
6. Livelihood displacement

Plan to Minimize

1. Limit to marginal use lands, market price and land dispersion
2. Public partners for takeout and public use leasing, future plans for easements
3. Diversify species, FSC management and maintenance of infrastructure
4. Limit to marginal use lands, promote local employment and grant funding
5. Disperse planting activities and project areas
6. Track potential displacement, track economic benefits for communities

Land Screening and Community Engagement

- To minimize adverse impacts, Chestnut Carbon uses land exploration software and has robust community engagement SOP's
 - When land is screened prior to acquisition, many layers are used to ensure it's a suitable fit
 - Demographic related data (EJScreen & EJAM – government datasets that highlight income, population data)
 - Cultural Significance Indicators
 - When indicators are recognized, Chestnut Carbon has operating procedures that extend to cultural analysis through desk audits and site visits, as well as targeted outreach strategies.



Key Monitoring Steps – Advisory Committee

An Advisory Committee of expert stakeholders are consulted on a regular and ad hoc basis. An expert stakeholder refers to the individuals that hold specific expertise or knowledge about the context and practices to which the project is applied (e.g., state conservation agencies, biologist, university department, etc.).



Key Monitoring Steps – How We Really Know What's Happening

What can communities and other stakeholders do to make sure the project happens as intended, and is well-monitored?

- Chestnut Carbon will be seeking to work with public partners and community members to crowdsource tree inventory and biodiversity metrics.
 - This last summer, we started a (paid) Intern program to conduct summer inventories. Future years will have more opportunities.
- Regular third-party verification of the project is required
- . Stakeholder input is always welcomed. Open form on our website always monitored.
 - [Chestnut Carbon Grievance Policy](#)
- All stakeholder feedback will be addressed during our annual report, and within next year's Gold Standard audit



Key Monitoring Steps – How We Really Know What's Happening

- Along with stakeholder feedback, we will also regularly monitor important impacts to the project's geographic area.
- Such examples include:
 - Land prices
 - Planting dispersion
 - Impacts on natural water patterns/flows
 - Erosion
 - Forest growth and management
 - HCV (High Conservation Value) / Critical Habitats
 - Endangered Species
 - SDG indicators measured (e.g., acres planted, jobs created)
 - Community engagement analysis and regular impact reports.



Checking In



BREAK



Group Discussion

- *How can we ensure that community engagement efforts are proactive, culturally relevant, and considerate of the needs and expectations of Chestnut Restoration project site neighbors and the larger community?*
- *What should we consider in project implementation to remain a good neighbor in LA?*

What's Next?

What will happen with information gathered from this meeting?

What are the next steps?

How else can you be heard and influence the project process going forward?

When and how will you hear from Chestnut Carbon next?

Who will you share with when you go home, back to the field, or back to the office today?



Thank you!

Your participation is critical to the success of this project.

We welcome your comments and feedback via the website or the evaluation forms provided.

Save the date for the follow-up webinar!
February 10, 2026

Contact us at info@chestnutcarbon.com

